



裘錦秋中學(屯門)
Ju Ching Chu Secondary School (Tuen Mun)

地址：香港屯門楊青路 28 號

Address: 28 Yeung Tsing Road, Tuen Mun, Hong Kong

網址 Web site: <http://www.jcctm.edu.hk>

電話 Tel.: (852)-2461 1555

傳真 Fax: (852)-2464 6161

電郵 E-mail: mail@jcctm.edu.hk

家長通告 2024-2025/364

2024-2025 年度第三階段乘搭校巴服務收費（繳費）

敬啟者：

學校將於 2025 年 5 月的上學日起安排第三階段校巴乘搭服務，若家長欲為 貴子弟申請校巴服務，請於 5 月 2 日前於 eClass 進行電子繳費以確認乘搭校巴之名額。

校巴收費為每月港幣 50 元，收費及路線表詳情如下：

階段	費用
2025 年 5 月至 7 月	\$125

校巴路線資料（上車位置可見於附件）

<u>路線一：元朗、天水圍線</u>	<u>路線二：屯門線</u>
<u>路線</u> 首站 元朗大馬路(近實惠附近) (7:15) > 元朗商會小學巴士站 (7:20) > 天水圍西鐵站 (7:30) > 洪水橋段(近巴士站位置) (7:35) 尾站 > 學校 (8:00) (路線及時間因應學校情況作微調)	<u>路線</u> 首站 粉嶺皇后山邨 (6:45) > 暉明邨(6:55) > 上水火車站(7:05) > 富泰邨迴旋處 (7:35) 尾站 > 學校 (8:00) (路線及時間因應學校情況作微調)

屆時請 貴子弟提前 5-10 分鐘於上車處等候，亦請家長提醒 貴子弟細閱注意事項及校巴安全守則。如有查詢，請致電 2461 1555 與校務處聯絡。

此致

貴家長

裘錦秋中學（屯門）

陳月平校長謹啟

二零二五年四月二十六日



裘錦秋中學(屯門)

Ju Ching Chu Secondary School (Tuen Mun)

地址：香港屯門楊青路 28 號

Address: 28 Yeung Tsing Road, Tuen Mun, Hong Kong

網址 Web site: <http://www.jcctm.edu.hk>

電話 Tel.: (852)-2461 1555

傳真 Fax: (852)-2464 6161

電郵 E-mail: mail@jcctm.edu.hk

注意事項

1. 校巴路線資料請參閱學校網站(<http://www.jcctm.edu.hk>)；
2. 校方有權更改校巴路線；
3. 車站開出時間或會因交通情況而改動，如有改動將會提早通知學生及家長；
4. 學生必須按指定上車地點及時間等候上車，請家長和學生必須提早 5-10 分鐘到達車站候車，逾時不候；
5. 校巴費用分三個階段收費，每個階段開始前將會發出通告予家長作申請；
6. 成功申請並繳費的家長，若在所屬階段決定不再使用校巴服務，有關款項將不獲退回；
7. 學生因任何原因缺席上課，校方不會退還有關日數的車費，敬請留意；
8. 若遇上惡劣天氣，校方將根據教育局的停課宣布暫停當天校巴服務；
9. 如學生未有合理証明而缺席乘搭校巴三次，將會記錄在案，有機會影響日後的申請；
10. 學生乘車權利不可私下轉讓。

校巴安全守則

1. 學生必須遵守「運輸署」之有關「乘搭校巴及保姆車安全守則」。
2. 學生乘坐校車時，必須遵守以下規則：
 - i) 除上車或下車時，切勿離開座位；
 - ii) 行車期間切勿與司機談話或在車內大聲呼叫；
 - iii) 保持車廂清潔；
 - iv) 當出現呼吸道病徵和病狀時，亦應戴上外科口罩，避免交叉感染；
 - v) 切勿將頭、手或身體任何部分伸出窗外；
 - vi) 切勿把玩緊急出口的太平門掣，以免發生危險；
 - vii) 如座位已裝上安全帶，學生必須扣上；
 - viii) 嚴禁站立、走動、飲食或玩耍；
 - ix) 上落車時要遵守秩序，車輛未完全停定，切勿上車或落車；
 - x) 學生下車後，應與即將駛離的車輛保持安全距離。
3. 校車內，同學切勿取出物品把玩。若該物品引致秩序或危險的情況，保姆有權代為保管該物品，並交由校方處理。
4. 候車或乘校車期間，作出危害個人或可能危害他人安全的行為，經勸喻不改，校方有權暫時停止或取消有紀律問題同學的乘搭資格。



裘錦秋中學(屯門)

Ju Ching Chu Secondary School (Tuen Mun)

地址：香港屯門楊青路 28 號

Address: 28 Yeung Tsing Road, Tuen Mun, Hong Kong

網址 Web site: <http://www.jcctm.edu.hk>

電話 Tel.: (852)-2461 1555

傳真 Fax: (852)-2464 6161

電郵 E-mail: mail@jcctm.edu.hk

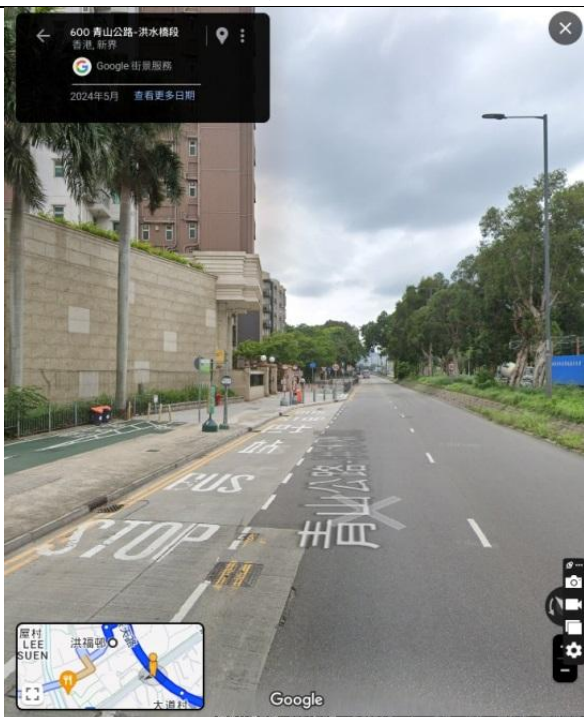
附件

路線一：元朗、天水圍線



元朗大馬路(近實惠附近) (7:15)

元朗商會小學巴士站 (7:20)



天水圍西鐵站 (7:30)

洪水橋段 (7:35) (近巴士站位置)



裘錦秋中學(屯門)

Ju Ching Chu Secondary School (Tuen Mun)

地址：香港屯門楊青路 28 號

Address: 28 Yeung Tsing Road, Tuen Mun, Hong Kong

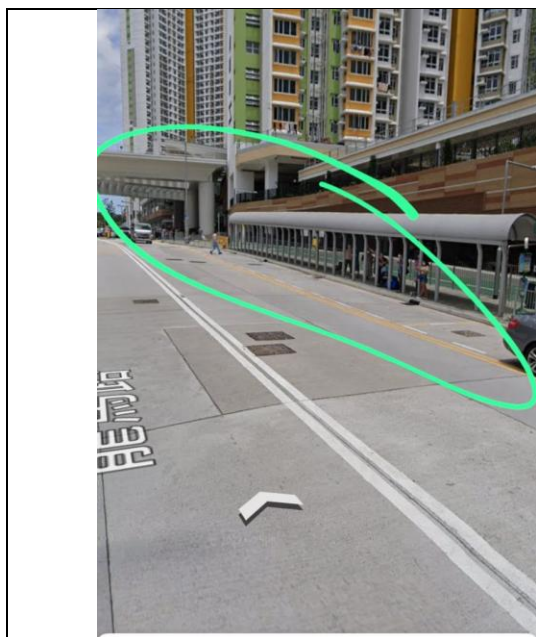
網址 Web site: <http://www.jcctm.edu.hk>

電話 Tel.: (852)-2461 1555

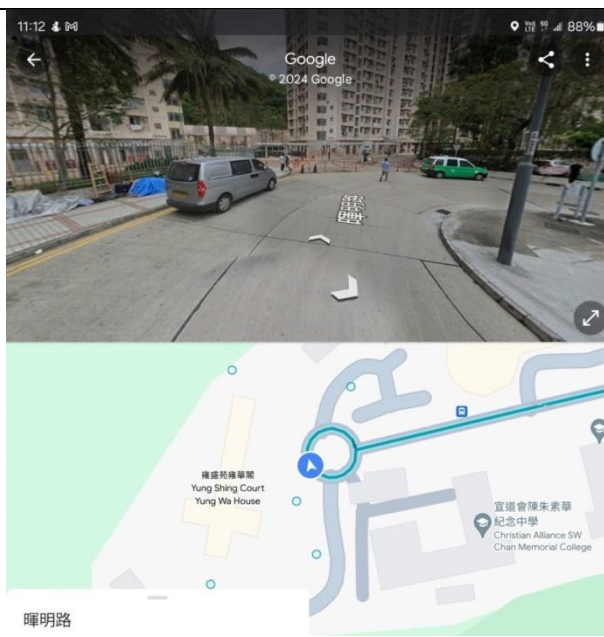
傳真 Fax: (852)-2464 6161

電郵 E-mail: mail@jcctm.edu.hk

路線二：屯門線



83 龍馬路



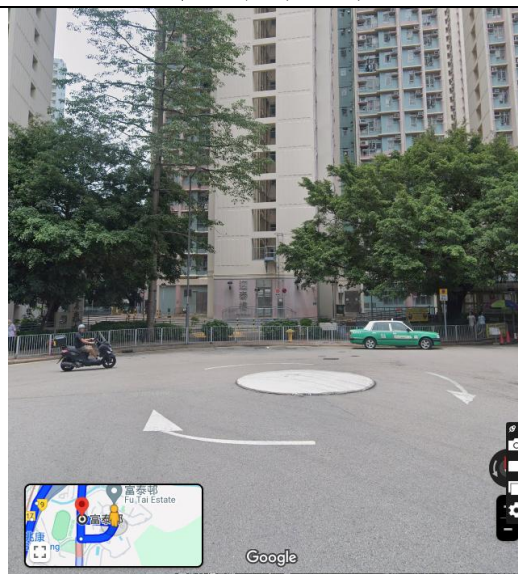
暉明路

粉嶺皇后山邨 (6:45)

暉明邨 (6:55)



上水火車站 (7:05)



富泰邨迴旋處 (7:35)



裘錦秋中學(屯門)
Ju Ching Chu Secondary School (Tuen Mun)

地址：香港屯門楊青路 28 號

Address: 28 Yeung Tsing Road, Tuen Mun, Hong Kong

網址 Web site: <http://www.jcctm.edu.hk>

電話 Tel.: (852)-2461 1555

傳真 Fax: (852)-2464 6161

電郵 E-mail: mail@jcctm.edu.hk

Parents Circulars 2024-2025/364

(2024-2025 School Year) The Third Stage School Bus Service (Payment)

Dear Parents/Guardians,

The school will arrange the third stage of the school bus service starting from the school day on May 2025. If parents wish to apply for the school bus service for their child, please complete the electronic payment on eClass by May 2 to confirm the bus seat.

The school bus fee is HKD 50 per month. The details are as follows:

Period	Fee
May to July, 2025	\$125

School Bus Route Information (See attachment):

Route 1: Yuen Long and Tin Shui Wai Line	Route 2: Tuen Mun Line
1. Yuen Long Main Road (near Pricerite) (7:15) 2. Yuen Long Chamber of Commerce Primary School Bus stop (7:20) 3. Tin Shui Wai West Station (7:30) 4. Hung Shui Kiu (near the bus station) (7:35) 5. School (8:00)	1. Fanling Queen's Hill Estate (6:45) 2. Fai Ming Estate (6:55) 3. Sheung Shui Train Station (7:05) 4. Fu Tai Estate Roundabout (7:35) 5. School (8:00)
(Routes and times are subjected to minor adjustments based on school circumstances)	

Please ensure that your child arrives at the pickup location 5-10 minutes early. Additionally, we kindly ask parents/ guardians to mind your child to adhere to the School Bus Route Information, Important Notes, and Safety Regulations when using the school bus service. For enquiry, please contact the school office at 2461 1555.

Yours faithfully,

Chan Yuet-Ping
Principal



裘錦秋中學(屯門)

Ju Ching Chu Secondary School (Tuen Mun)

地址：香港屯門楊青路 28 號

Address: 28 Yeung Tsing Road, Tuen Mun, Hong Kong

網址 Web site: <http://www.jcctm.edu.hk>

電話 Tel.: (852)-2461 1555

傳真 Fax: (852)-2464 6161

電郵 E-mail: mail@jcctm.edu.hk

Important Notes:

1. Please refer to the school website (<http://www.jcctm.edu.hk>) for school bus route information.
2. The school reserves the right to change the bus routes.
3. Departure times may be adjusted due to traffic conditions, and any changes will be communicated to students and parents in advance.
4. Students must wait at the designated pick-up points and arrive 5-10 minutes early; buses will not wait for latecomers.
5. The bus fee is collected in three stages, with notifications sent to parents prior to each stage.
6. Fees paid are non-refundable if parents decide not to use the service after successful application and payment.
7. No refunds will be given for missed bus rides due to student absences.
8. In cases of inclement weather, bus services will be suspended according to the Education Bureau's announcements.
9. Students who miss the bus without valid reasons three times may have their future applications affected.
10. Bus rights are non-transferable.

Safety Regulations:

1. Students must adhere to the Transport Department's safety guidelines for riding school buses.
2. While on the bus, students must:
 1. Remain seated except when boarding or alighting.
 2. Not engage in discussions with the driver or make loud noises during transit.
 3. Keep the bus clean.
 4. Wear a surgical mask if exhibiting respiratory symptoms to prevent cross-infection.
 5. Not extend any body parts outside the bus windows.
 6. Not tamper with emergency exits.
 7. Buckle up if seatbelts are provided.
 8. Not stand, move around, eat, or play while the bus is in motion.
 9. Follow proper procedure when boarding or alighting; do not board or alight while the vehicle is in motion.
 10. Maintain a safe distance from departing vehicles after disembarking.
3. Students must not play with any items on the bus that could disturb order or pose a danger; staff may confiscate such items for safety.
4. Any behavior endangering personal or others' safety while waiting or riding the bus may result in suspension or cancellation of bus privileges.



裘錦秋中學(屯門)

Ju Ching Chu Secondary School (Tuen Mun)

地址：香港屯門楊青路 28 號

網址 Web site : <http://www.jcctm.edu.hk>

電話 Tel. : (852)-2461 1555

傳真 Fax : (852)-2464 6161

電郵 E-mail : mail@jcctm.edu.hk

Attachment

Route 1: Yuen Long and Tin Shui Wai Line:



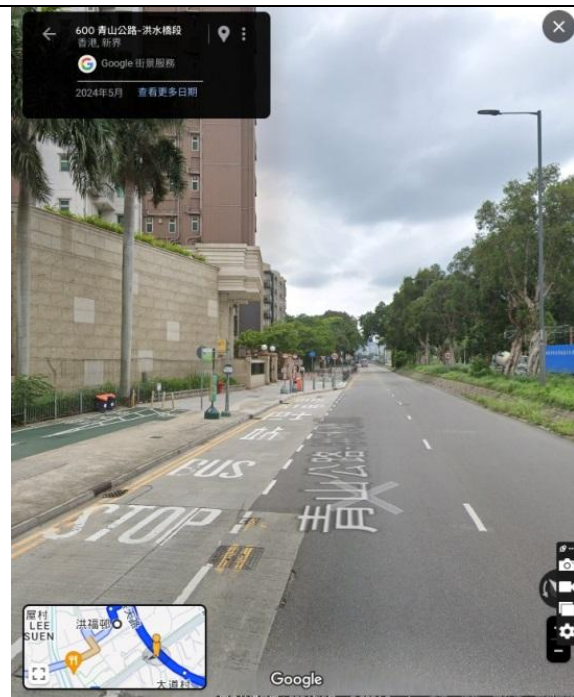
Yuen Long Main Road (near Pricerite) (7:15)



Yuen Long Chamber of Commerce Primary
School Bus stop (7:20)



Tin Shui Wai West Station (7:30)



Hung Shui Kiu (near the bus station) (7:35)



裘錦秋中學(屯門)

Ju Ching Chu Secondary School (Tuen Mun)

地址：香港屯門楊青路 28 號

Address: 28 Yeung Tsing Road, Tuen Mun, Hong Kong

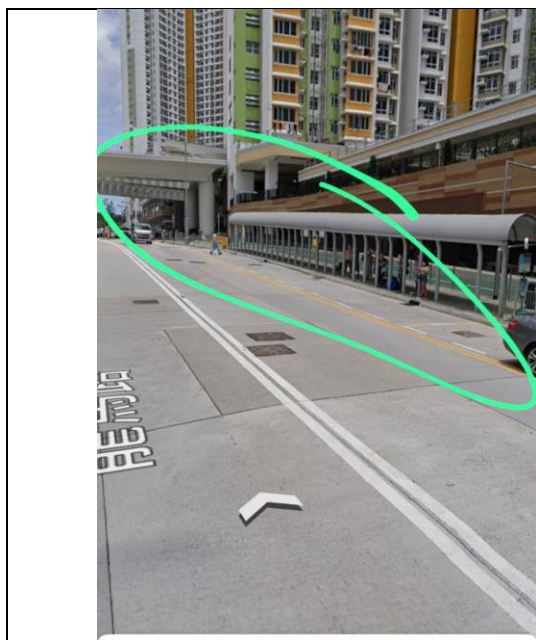
網址 Web site: <http://www.jcctm.edu.hk>

電話 Tel.: (852)-2461 1555

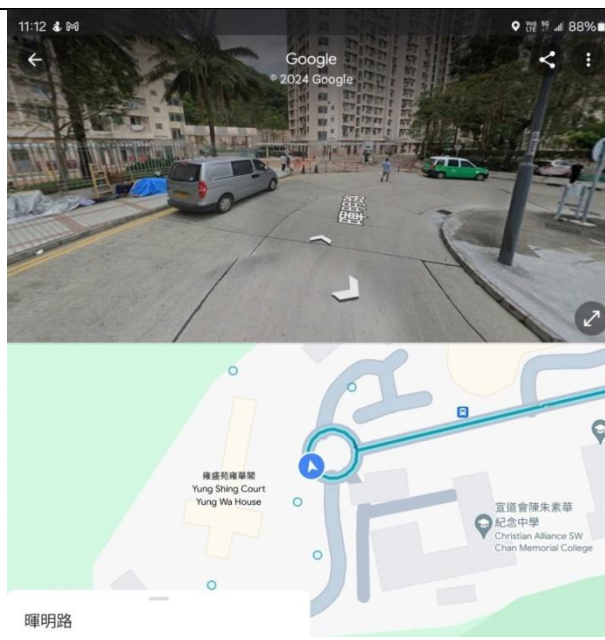
傳真 Fax: (852)-2464 6161

電郵 E-mail: mail@jcctm.edu.hk

Route 2: Tuen Mun Line:



83 龍馬路



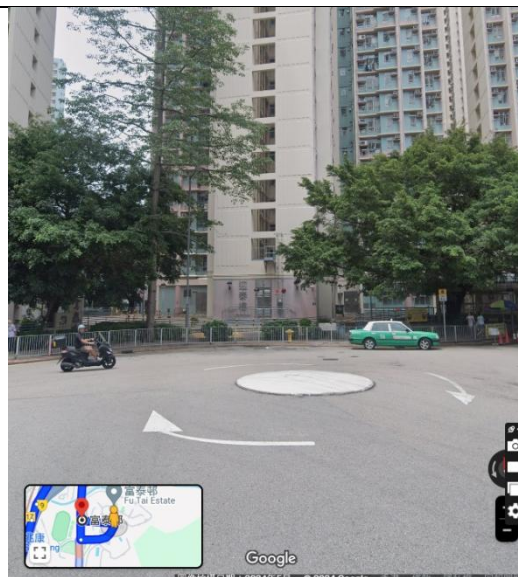
暉明路

Fanling Queen's Hill Estate (6:45)

Fai Ming Estate (6:55)



Sheung Shui Train Station (7:05)



Fu Tai Estate Roundabout (7:35)